

# Horizontal Sliding Door Rectangular Steam Sterilizer

## Eliminating the Microorganisms

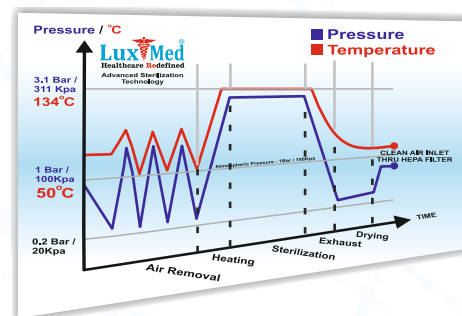
The LuxMed<sup>®</sup> line of healthcare sterilizers are designed for hospital operation theaters, central sterile supply departments, ambulatory surgery centers, dental schools, and other clinical settings. LuxMed<sup>®</sup> autoclaves come standard with vacuum, liquid, gravity and flash cycles to sterilize surgical instruments, utensils, gowns, wrapped/unwrapped and supplies. All sterilizers components, maximizing total cost of ownership. defense against infection seriously.

### Horizontal Sliding Rectangular Sterilizer LM-HSRS

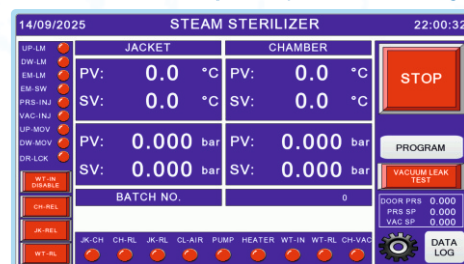
LuxMed<sup>®</sup> LM-HSRS is designed to provide faster instrument availability to a lower total cost. You can cut process time by up to 30% and reduce utility consumption and thus improve your environmental profile while saving money. It is better for both your patient and our planet.

### Quality in every detail

Thanks to its small footprint and adherence to international standards, the new LuxMed<sup>®</sup> LM-HSRS sterilizer fits easily into most existing CSSD lines. Our experts will be happy to review your needs and your present CSSD configuration with you and design a customized solution that enables you to upgrade your system – and boost your throughput – at a low cost and with minimal disruption.



### LuxMed<sup>®</sup> Proprietary Software Design



#### Faster instrument availability

Content Processing time is up to 30% faster, giving maximum throughput. Thanks to the automatic start-up, the sterilizer is ready to use when you need it.

#### Intuitive Centric user-interface

Highly innovative interface ensures easy operation and optimum throughput. Full functionality with or without gloves.

#### Increase load capacity without increasing space

A taller chamber - complemented by a unique sliding door design - gives you up to 33% greater load capacity.

#### Save money and the environment

Uses as much as 95% less water and 25% less energy than comparable sterilizers.

#### Always connected

Monitors and records all cycle performance data - with instant access via the LM-CFR Cloud user interface. Records can be printed, stored and read by sterile supply management and traceability solutions.

Model (Indian Market)	Working Chamber (in Inch)	Capacity (in Litre)	Power Consumptions (3 Phase / 440Vac)	Door
LM-HSRS-180-SD	18"X18"X36"	180 Liter	12 Kw	Single Door
LM-HSRS-250-SD	18"X24"X36"	250 Liter	12 Kw	Single Door
LM-HSRS-350-SD	24"X24"X38"	350 Liter	18 Kw	Single Door
LM-HSRS-450-SD	24"X24"X48"	450 Liter	18 Kw	Single Door
LM-HSRS-850-SD	24"X36"X60"	850 Liter	27 Kw	Single Door
LM-HSRS-180-DD	18"X18"X36"	180 Liter	12 Kw	Double Door
LM-HSRS-250-DD	18"X24"X36"	250 Liter	12 Kw	Double Door
LM-HSRS-350-DD	24"X24"X38"	350 Liter	18 Kw	Double Door
LM-HSRS-450-DD	24"X24"X48"	450 Liter	18 Kw	Double Door
LM-HSRS-850-DD	24"X36"X60"	850 Liter	27 Kw	Double Door

### Technical data - Export Model

Model (Export Market)	Unit	LM-HSRS-EX-10	LM-HSRS-EX-13	LM-HSRS-EX-17	LM-HSRS-EX-20
Chamber volume -1 (single door)	L / Cu ft	468 / 16,5	609 / 21,5	796 / 28,1	-
Chamber volume -2 (double door)	L / Cu ft	468 / 16,5	609 / 21,5	796 / 28,1	937 / 33,1
Chamber width	mm / in	660 / 26"	660 / 26"	660 / 26"	660 / 26"
Chamber height	mm / in	700 / 27" 1/2	700 / 27" 1/2	700 / 27" 1/2	700 / 27" 1/2
Chamber depth	mm / in	1000 / 39" 3/8	1300 / 51" 1/4	1700 / 66" 7/8	2000 / 78" 3/4

